

QGRIP

QGrip-UI Trace Menu

GRIP ON SOL

2024-04-16

Contents

1	Introduction	3
2	Trace Window	4
3	Approval.....	4
4	QGrip Users.....	5
5	Teams.....	6
6	Instances	6
7	Backup Shares	7
8	Applications.....	7
9	Errors.....	8
10	Warnings	9

1 Introduction

This document describes all items in the Trace Menu of the QGrip-UI.

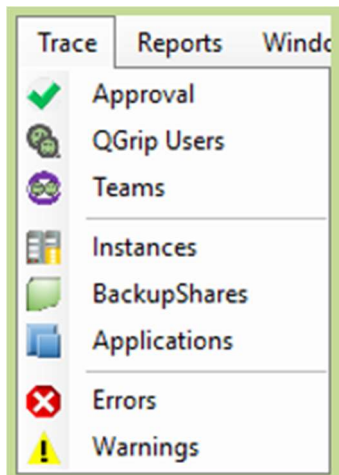
QGrip saves certain actions and changes to trace tables. The records in the Trace tables can be viewed under the Trace Menu.

Required QGrip Role	Menu
QGrip-Admin	Trace

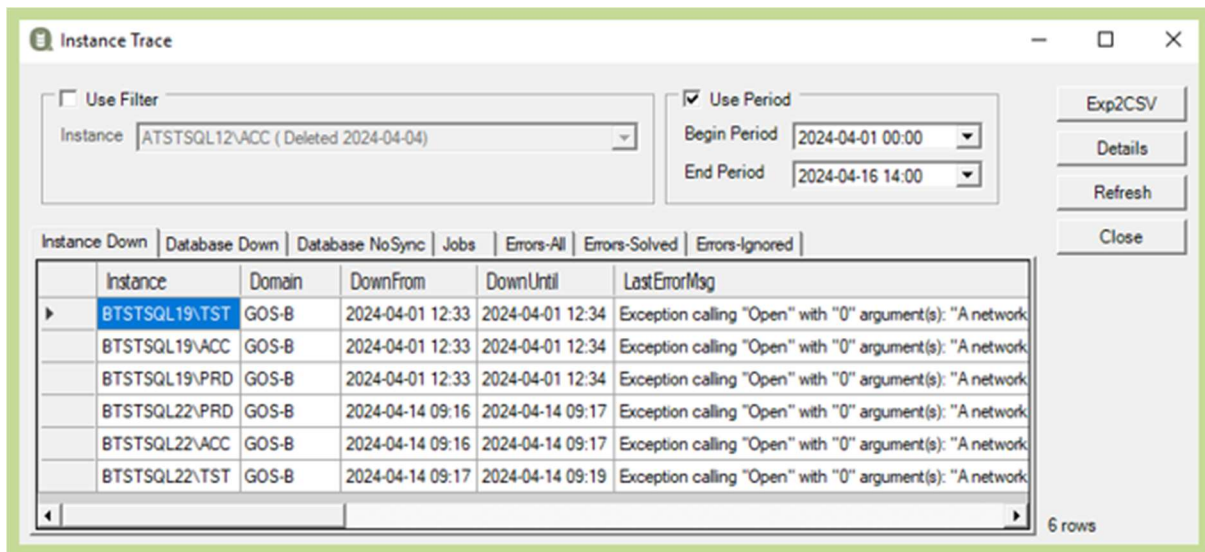
Recommended documentation

Doc-Tab	Title
Reports	Trace Reports

Note that the Admin menu will only be visible for QGrip-Admin users and all Menu-Items will be enabled.



2 Trace Window



The layout of all trace windows is the same.

Use Filter

Checking "Use Filter" will allow you to narrow down your search result by selecting a certain item.

Use Period

When "Use Period" is unchecked, the Begin and End period parameters are ignored. This might result in a lot of record, so handle with care.

Exp2CSV Button

Exports the content of the Active tab to a CSV-file. A dialog will be opened where you can choose file name and location.

Details Button

Opens a window with the content for each row currently selected. The content can be saved to a text file.

Tabs

The visible Tabs depend on the different trace types and is described in the next sections.

Inserted, Deleted, Updated

If the tabpage data contains a chronological trace, the [Action] column will contain an indication whether the record has been Inserted, Updated or Deleted.

3 Approval

Who has given Approval to Team Membership and Jobs requests, both Approved and Denied.

Per tabpage

Team Membership

Which Team membership requests have been Approved (or denied) By?

Selection criteria:

Approval By

Approval Date

Jobs

Which Jobs requests have been Approved (or denied) By?

Selection criteria:

Approval By

Approval Date

4 QGrip Users

Shows traces of what QGrip users have done.

Per tabpage

Team Membership

Requested team membership

Selection criteria:

Requested By

Requested Date

Member of Team

Of which Teams has the QGrip user been member?

Selection criteria:

Member

Modified Date

Jobs

Which jobs has the QGrip user requested?

Selection criteria:

Requested By

Requested Date

Errors-Solved

Which Errors in the Message bar has the QGrip user removed as solved.

Selection criteria:

Action By

Action Date

Errors-Ignored

Which Errors in the Message bar has the QGrip user removed as Ignored.

Selection criteria:

Action By

Action Date

5 Teams

A trace record is made of every change made to a Team, including Authorisation.

Per tabpage

Team Membership

Requested team membership

Selection criteria:

Team

Requested Date

Team

Changes to Team Details (Inserted, Updated, Deleted).

Selection criteria:

Team

Modified Date

Authorisation

Changes to Team Authorisations (Inserted, Updated, Deleted).

Selection criteria:

Team

Modified Date

Members

Changes to Team Members (Inserted, Deleted).

Selection criteria:

Team

Modified Date

Members

Changes to Team Applications (Inserted, Deleted).

Selection criteria:

Team

Modified Date

6 Instances

Trace info relevant for Instances.

Per tabpage

Instance Down

When has Instance been down, not approachable?

Selection criteria:

Instance

DownFrom and DownUntil

Jobs

Which jobs have been requested and started on the Instance?

Selection criteria:

Instance

StartAfter

Errors-All

Which (Job) Errors have occurred on the Instance? Open, Solved and Ignored

Selection criteria:

Instance

JobEnded

Errors-Solved

Which (Job) Errors have occurred on the Instance? Solved by a QGrip User.

Selection criteria:

Instance

JobEnded

Errors-Ignored

Which (Job) Errors have occurred on the Instance? Ignored by a QGrip User.

Selection criteria:

Instance

JobEnded

7 Backup Shares

Trace info relevant for Backup Shares.

Per tabpage**BackupShare Down**

When has BackupShare been down, not approachable?

Selection criteria:

BackupShare

DownFrom and DownUntil

8 Applications

Trace info relevant for an Application.

Per tabpage**Teams**

To which teams has the Application been added. (Inserted, Deleted)

Selection criteria:

Application

Modified Date

Jobs

Which jobs have been requested for Application Object (Database)?

Selection criteria:

Application

StartAfter

Errors-All

Which (Job) Errors have occurred on Application Object (Database)? Open, Solved and Ignored

Selection criteria:

Application

JobEnded

Errors-Solved

Which (Job) Errors have occurred on Application Object (Database)? Solved by a QGrip User.

Selection criteria:

Application

JobEnded

Errors-Ignored

Which (Job) Errors have occurred on Application Object (Database)? Ignored by a QGrip User.

Selection criteria:

Application

JobEnded

9 Errors

Which errors have occurred, per Jobtype?

Per tabpage**Errors-All**

Which (Job) Errors have occurred? Open, Solved and Ignored

Selection criteria:

JobType

JobEnded

Errors-Solved

Which (Job) Errors have occurred? Solved by a QGrip User.

Selection criteria:

JobType

JobEnded

Errors-Ignored

Which (Job) Errors have occurred? Ignored by a QGrip User.

Selection criteria:

JobType

JobEnded

10 Warnings

The trace of all Warnings that have occurred.

Per tabpage

Warnings

Which Warning have been issued (Inserted, Updated, Deleted)?

Selection criteria:

Category

Modified Date